

BALDOR® • RELIANCE 

Product Information Packet

VJPFPM2531T

25//20HP,1760//1460RPM,3PH,60//50HZ,284J

Part Detail							
Revision:	M	Status:	PRD/A	Change #:		Proprietary:	No
Type:	AC	Elec. Spec:	39WGX929	CD Diagram:	CD0104	Mfg Plant:	
Mech. Spec:	39T043	Layout:	39LYT043	Poles:	04	Created Date:	01-07-2016
Base:	N	Eff. Date:	09-24-2018	Leads:	12#10		

Specs			
Catalog Number:	VJPFPM2531T	Front Shaft Indicator:	None
Enclosure:	OPSB	Heater Indicator:	No Heater
Frame:	284JP	Insulation Class:	F
Frame Material:	Steel	Inverter Code:	Not Inverter
Output @ Frequency:	20.000 HP @ 50 HZ	KVA Code:	F
	25.000 HP @ 60 HZ	Lifting Lugs:	Vertical Lifting Lugs
Synchronous Speed @ Frequency:	1500 RPM @ 50 HZ	Locked Bearing Indicator:	Locked Bearing
Voltage @ Frequency:	380.0 V @ 50 HZ	Motor Lead Quantity/Wire Size:	12 @ 10 AWG
	230.0 V @ 60 HZ	Motor Lead Exit:	Ko Box
	190.0 V @ 50 HZ	Motor Lead Termination:	Flying Leads
	460.0 V @ 60 HZ	Motor Type:	3956M
XP Class and Group:	None	Mounting Arrangement:	F1
XP Division:	Not Applicable	Power Factor:	87
Agency Approvals:	UL	Product Family:	Fire Pump Motor
	CSA EEV	Pulley End Bearing Type:	Ball
Auxillary Box:	No Auxillary Box	Pulley Face Code:	C-Face
Auxillary Box Lead Termination:	None	Pulley Shaft Indicator:	Tapped & Key
Base Indicator:	No Mounting	Rodent Screen:	Included

Bearing Grease Type:	Polyrex EM (-20F +300F)	Shaft Extension Location:	Pulley End
Blower:	None	Shaft Ground Indicator:	No Shaft Grounding
Current @ Voltage:	58.000 A @ 230.0 V	Shaft Rotation:	Reversible
	58.000 A @ 190.0 V	Shaft Slinger Indicator:	Shaft Slinger
	29.000 A @ 460.0 V	Speed Code:	Single Speed
	29.000 A @ 380.0 V	Motor Standards:	NEMA
Design Code:	B	Starting Method:	Wye Start - Delta Run
Drip Cover:	Drip Cover	Thermal Device - Bearing:	None
Duty Rating:	CONT	Thermal Device - Winding:	None
Electrically Isolated Bearing:	Not Electrically Isolated	Vibration Sensor Indicator:	No Vibration Sensor
Feedback Device:	NO FEEDBACK	Winding Thermal 1:	None
Front Face Code:	Drip Cover Mounting	Winding Thermal 2:	None

Nameplate NP3454L											
CAT.NO.	VJPFPM2531T			CUST P/N				I.P.	23		
SPEC.	39T043X929H2			SER.NO.				FRAME	284JP		
HZ	60	HP	25	RPM	1760	HZ	50	HP	20	RPM	1460
VOLTS	230/460			CODE	F	VOLTS	190/380			CODE	F
AMPS	58/29			DES	B	AMPS	58/29			DES	B
EFF	92.4	SER.F.	1.15	PF	87	EFF	91	SER.F.	1.15	PF	87
RATING	40C AMB-CONT			DE BRG	6312			GREASE	POLYREX EM		
BLANK				ODE BRG	6208			MTR. WT.	300		
				CLASS	F						
				ENCL	OPSB						
								PH	3		
								CC	010A		
HTR-VOLTS		HTR-AMPS		HTR-WATTS							

Parts List		
Part Number	Description	Quantity
SA313085	SA 39T043X929H2	1.000 EA
RA300529	RA 39T043X929H2	1.000 EA
HW3201A01	1/2-13 EYEBOLT	1.000 EA
09CB2800A01	ADAPTER MACH FOR 09CB3000 AND 10CB3000	1.000 EA
19XW3118A08	.31-18 X .50 HEX WASHER HEAD TAPTITE II	2.000 EA
HW1001A31	LOCKWASHER 5/16, ZINC PLT.591 OD, .319 I	2.000 EA
WD1000B25	GND LUG, BURNDY L125HP OR T&B L125HP-BB	1.000 EA
19XW3118G08	.31-18X.50,HEX WSHR HD,TAPTITE 2,GREEN	1.000 EA
10CB3000SP	KOBX, CAST W/2.00 LEAD HOLE	1.000 EA
19XW3118A12	.31-18 X .75 HEX WASHER HEAD TAPTITE II	4.000 EA
39EP3200A02	FR E P, MACH - DR CVR MTG	1.000 EA
HW5100A08	W3118-035 WVY WSHR (WB)	1.000 EA
HA1101A01	RODENT SCREEN, 39 MTR	1.000 EA
51XW1032A06	10-32 X .38, TAPTITE II, HEX WSHR SLTD S	4.000 EA
39EP1404A09	PUEP MACH, 284-6JP OPEN, RODENT SCREEN	1.000 EA
HA1101A06	RODENT SCREEN FOR 39EP1404	1.000 EA
51XW1032A06	10-32 X .38, TAPTITE II, HEX WSHR SLTD S	6.000 EA
10XN3118K40	5/16-18 X 2.50" HEX HD, GRADE 5	4.000 EA
HW1001A31	LOCKWASHER 5/16, ZINC PLT.591 OD, .319 I	4.000 EA
HW1001A31	LOCKWASHER 5/16, ZINC PLT.591 OD, .319 I	4.000 EA
HA2009A03	SLINGER, ALUMINUM, (AUTO)ANODIZED ALUM	1.000 EA
80XN1032A06	10-32 X 3/8 SET SC HEX SOCK	1.000 EA
HW1001A38	LOCKWASHER 3/8, ZINC PLT .688 OD, .382 I	4.000 EA
HA7205	"L" SHAPE LIFTING LUG FOR 37,39 & 40 FRA	2.000 EA

Parts List (continued)		
Part Number	Description	Quantity
39FH4500A01	DRIP COVER, STAMPED	1.000 EA
10XN2520K16	1/4-20 X 1" HX HD SCRW GRADE 5, ZINC P	2.000 EA
HA2001B08	SPL SPACER FOR AIR DEFLECTOR .50 O.D. X	2.000 EA
10CB3500SP	CONDUIT BOX LID, CAST	1.000 EA
51XW2520A12	.25-20 X .75, TAPTITE II, HEX WSHR SLTD	4.000 EA
HW2501E18	KEY, 1/4 SQ X 2.000	1.000 EA
LB1115N	LABEL,LIFTING DEVICE (ON ROLLS)	1.000 EA
LB1182	WARNING LABEL FOR MOTORS WITH EYENUTS	2.000 EA
PK6016	BASELESS FOOT BRACKET FOR 39 & 40 FRAME	3.000 EA
10XN6311K20	5/8-11X 1 1/4 HEX HD, GRADE 5	2.000 EA
HW1000A63	5/8 SAE FLAT WASHER 1.31 DIA	2.000 EA
XY3816A12	3/8-16 FINISHED NUT	1.000 EA
HW1001A38	LOCKWASHER 3/8, ZINC PLT .688 OD, .382 I	1.000 EA
HW4500A03	GREASE FITTING, .125 NPT 1610(ALEMITE) 8	1.000 EA
HW4500A20	1/8NPT SL PIPE PLUG	1.000 EA
HA4051A00	PLASTIC CAP FOR GREASE FITTING	1.000 EA
HA3113A05	THRUBOLT 3/8 - 16 X 17.250	3.000 EA
HA3154A10	THRUBOLT STUD 3/8-16 X 18.250"	1.000 EA
MJ1000A02	GREASE, MOBIL POLYREX EM - 124047	0.030 LB
HW4500A03	GREASE FITTING, .125 NPT 1610(ALEMITE) 8	1.000 EA
HW4500A20	1/8NPT SL PIPE PLUG	1.000 EA
HA4051A00	PLASTIC CAP FOR GREASE FITTING	1.000 EA
MG1025R44	WILKOFAS, 784.109, CARMINE RED #3002	0.050 GA
85XU0407S04	4X1/4 U DRIVE PIN STAINLESS	2.000 EA

Product Information Packet: VJPFPM2531T - 25//20HP,1760//1460RPM,3PH,60//50HZ,284J

39AD2002A01	BAFFLE PLATE 39 OPEN, SLOTTED BAND MTRS	1.000 EA
39AD2002A01	BAFFLE PLATE 39 OPEN, SLOTTED BAND MTRS	1.000 EA
LB1119N	WARNING LABEL	1.000 EA
LC0104A01	CONNECTION DIAGRAM	1.000 EA
NP3454L	ALUM FIRE PUMP MOTOR(LEGACY/BALDOR ONLY)	1.000 EA
39PA1017	PACKAGING GP TALL CENTERED 09 CRATE	1.000 EA

AC Induction Motor Performance Data

Record # 54768 - Typical performance - not guaranteed values

Winding: 39WGX929-R001	Type: 3956M	Enclosure: OPSB
-------------------------------	--------------------	------------------------

Nameplate Data				460 V, 60 Hz: High Voltage Connection	
Rated Output (HP)	25//20			Full Load Torque	75.1 LB-FT
Volts	230/460//190/380			Start Configuration	direct on line
Full Load Amps	58/29			Breakdown Torque	202 LB-FT
R.P.M.	1760//1460			Pull-up Torque	99.1 LB-FT
Hz	60//50	Phase	3	Locked-rotor Torque	120 LB-FT
NEMA Design Code	B	KVA Code	F	Starting Current	172 A
Service Factor (S.F.)	1.15			No-load Current	8.92 A
NEMA Nom. Eff.	92.4	Power Factor	87	Line-line Res. @ 25°C	0.4172 Ω
Rating - Duty	40C AMB-CONT			Temp. Rise @ Rated Load	52°C
S.F. Amps				Temp. Rise @ S.F. Load	66°C
				Locked-rotor Power Factor	32.1

Load Characteristics 460 V, 60 Hz, 25 HP

% of Rated Load	25	50	75	100	125	150	S.F.
Power Factor	57	77	85	87	88	87	88
Efficiency	91.8	93.7	93.4	92.5	91.1	89.4	91.7
Speed	1790.4	1780.8	1771.1	1759.6	1746.7	1731.2	1752
Line amperes	11.3	16	22.5	29.2	36.4	45.1	33.5

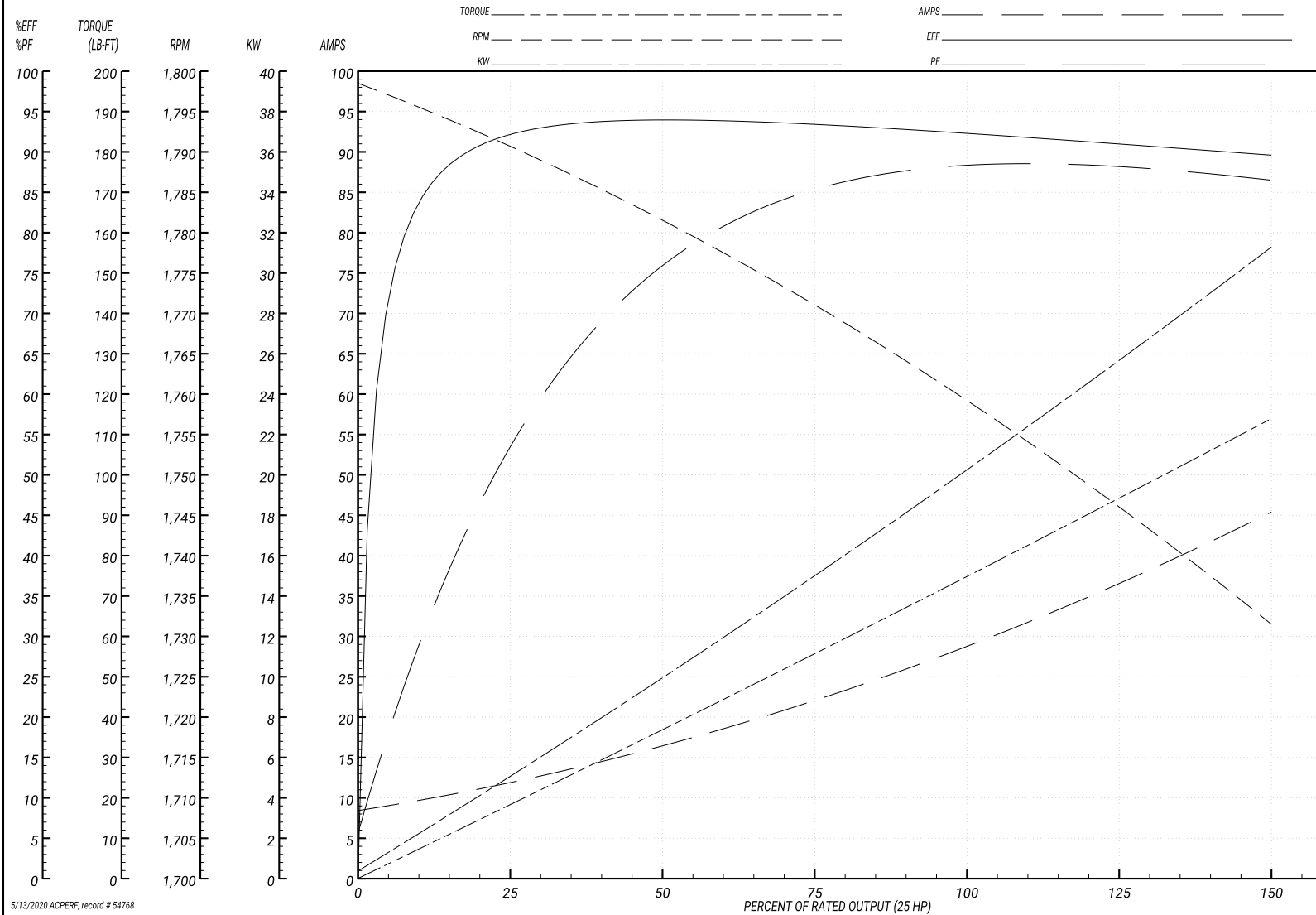
Performance Graph at 460V, 60Hz, 25.0HP Typical performance - Not guaranteed values

ABB Motors and Mechanical Inc.

WINDING # 39WGX929

Typical performance - not guaranteed values.

25 HP 3 PH 60 HZ 1759.6 RPM 460 V 3956M
 TORQUES(LB-FT): PO=202 PU=99.1 LR=120 LRA=172



5/13/2020 ACPERF, record # 54768

AC Induction Motor Performance Data

Record # 54786 - Typical performance - not guaranteed values

Winding: 39WGX929-R001	Type: 3956M	Enclosure: OPSB
-------------------------------	--------------------	------------------------

Nameplate Data				380 V, 50 Hz: High Voltage Connection	
Rated Output (HP)	25//20			Full Load Torque	72.4 LB-FT
Volts	230/460//190/380			Start Configuration	direct on line
Full Load Amps	58/29			Breakdown Torque	194 LB-FT
R.P.M.	1760//1460			Pull-up Torque	102 LB-FT
Hz	60//50	Phase	3	Locked-rotor Torque	123 LB-FT
NEMA Design Code	B	KVA Code	F	Starting Current	167 A
Service Factor (S.F.)	1.15			No-load Current	8.77 A
NEMA Nom. Eff.	92.4	Power Factor	87	Line-line Res. @ 25°C	0.392 Ω
Rating - Duty	40C AMB-CONT			Temp. Rise @ Rated Load	51°C
S.F. Amps				Temp. Rise @ S.F. Load	65°C
				Locked-rotor Power Factor	35.4
				Rotor inertia	2.45 LB-FT ²

Load Characteristics 380 V, 50 Hz, 20 HP

% of Rated Load	25	50	75	100	125	150	S.F.
Power Factor	57	77	85	87	88	87	88
Efficiency	90.9	93.1	92.7	91.6	90.2	88.2	90.8
Speed	1491	1482	1472	1461	1449	1434	1454
Line amperes	11.1	15.6	21.9	28.5	35.6	44.2	32.8

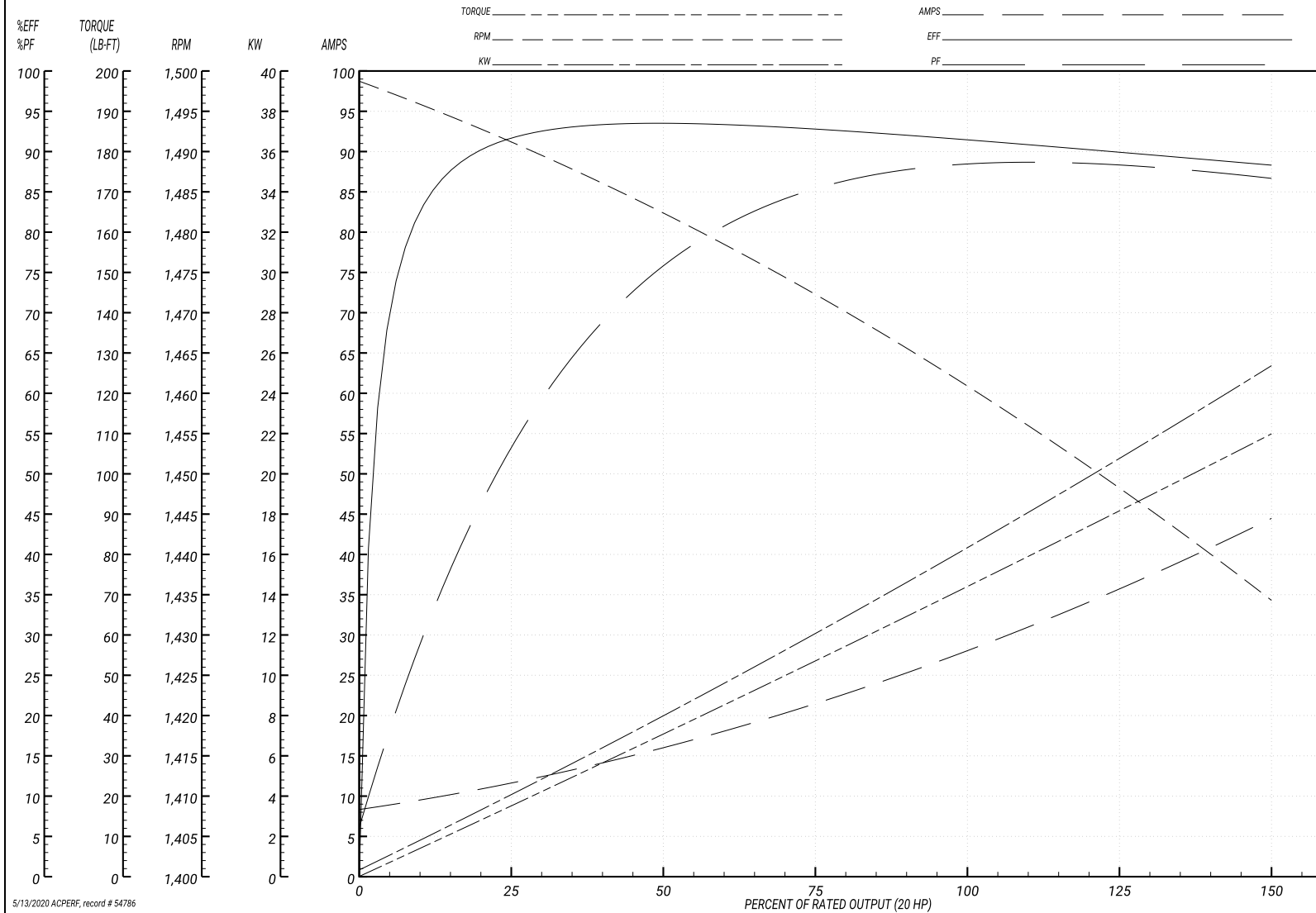
Performance Graph at 380V, 50Hz, 20.0HP Typical performance - Not guaranteed values

ABB Motors and Mechanical Inc.

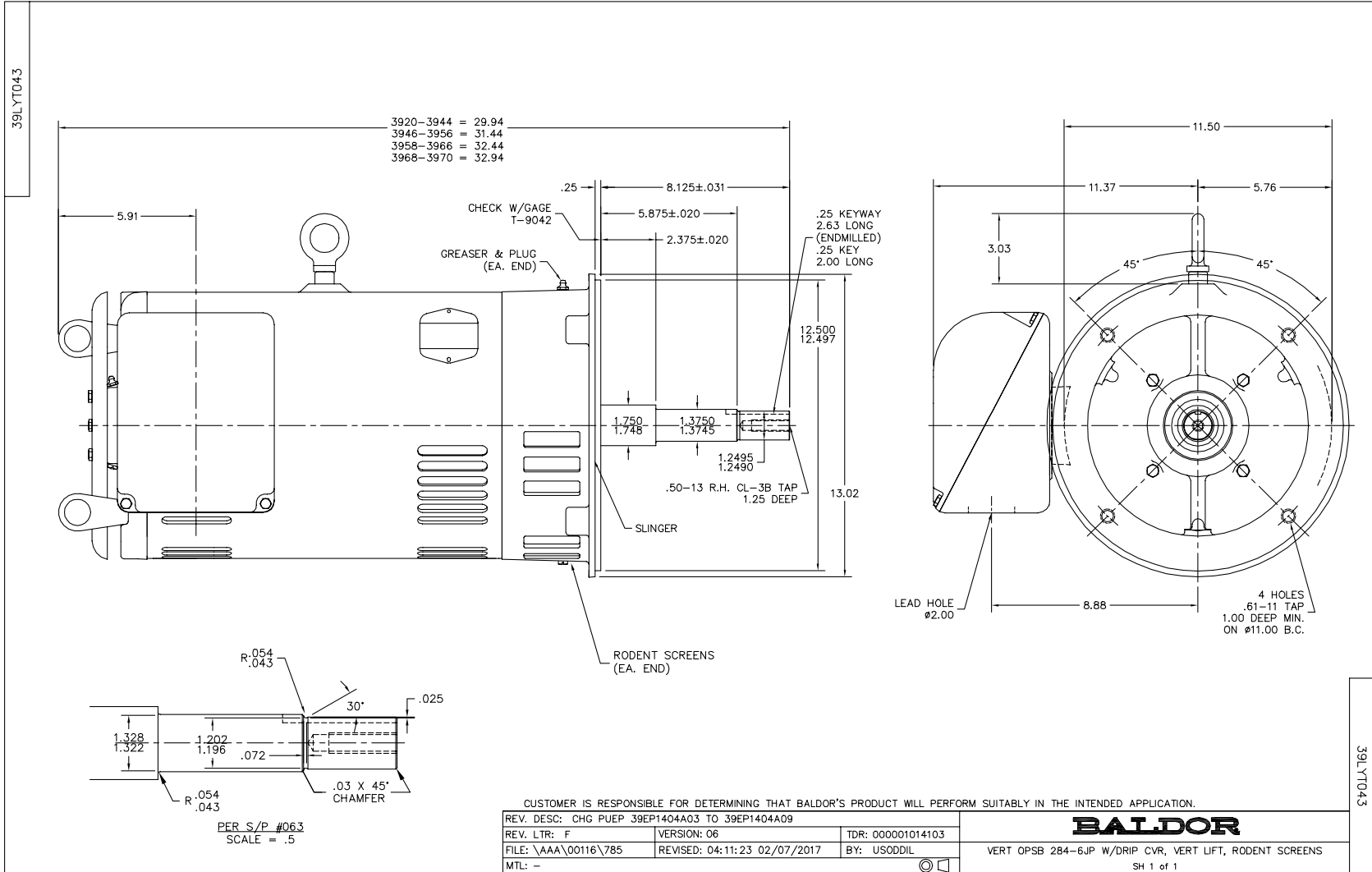
WINDING # 39WGX929

Typical performance - not guaranteed values.

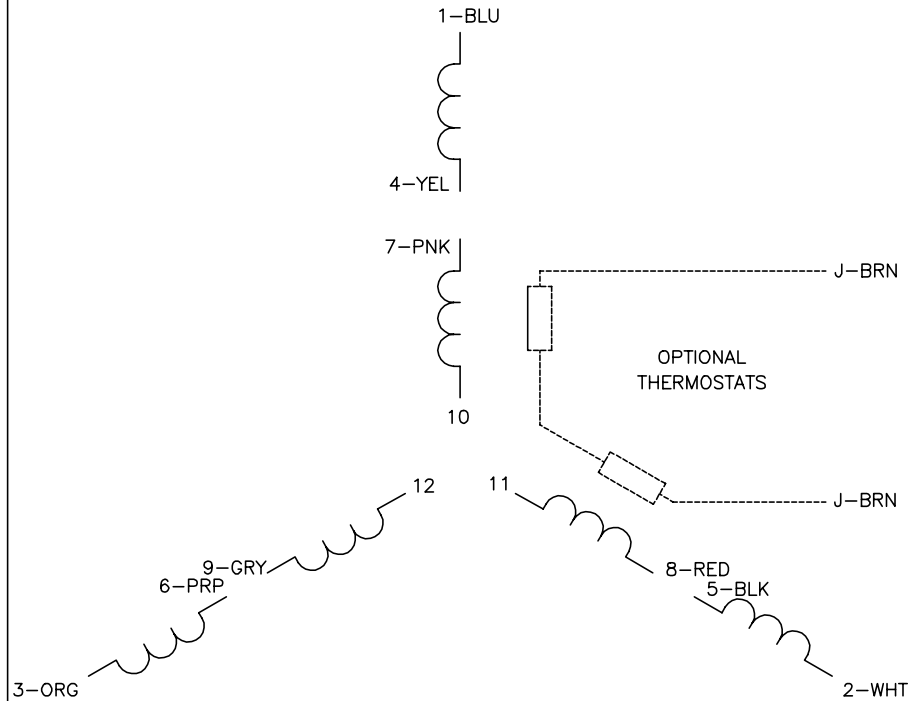
20 HP 3 PH 50 HZ 1461 RPM 380 V 3956M
 TORQUES(LB-FT): PO=194 PU=102 LR=123 LRA=167



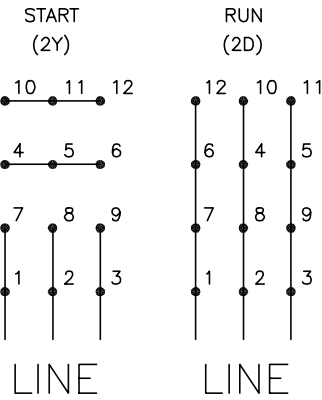
5/13/2020 ACPERF, record # 54786



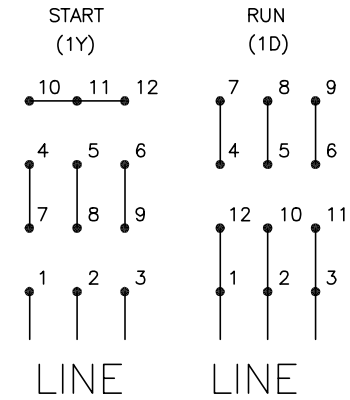
CD0104



LOW VOLTAGE



HIGH VOLTAGE



NOTES:

1. INTERCHANGE ANY TWO LINE LEADS TO REVERSE ROTATION.
2. OPTIONAL THERMOSTATS ARE PROVIDED WHEN SPECIFIED.
3. ACTUAL NUMBER OF INTERNAL PARALLEL CIRCUITS MAY BE A MULTIPLE OF THOSE SHOWN ABOVE.
4. LEAD COLORS ARE OPTIONAL. LEADS MUST ALWAYS BE NUMBERED AS SHOWN.

CD0104

REV. DESC: ADD CLASS CONN00000007		
REV. LTR: D	VERSION: 01	TDR: 000001099922
FILE: \AAA\00008\377	REVISED: 09:02:55 02/19/2019	BY: ENBRIRO
MTL: -		

BALDOR - RELIANCE®

3PH, DV, 12 LEADS, Y START/D RUN

SH 1 of 1

Marketing maintained PDF of MN416:

<http://www.baldor.com/support/Literature/Load.ashx/MN416?ManNumber=MN416>